



# MUIR CONSULTING, Inc.

Land Surveying ♦ G. P. S. ♦ Planning

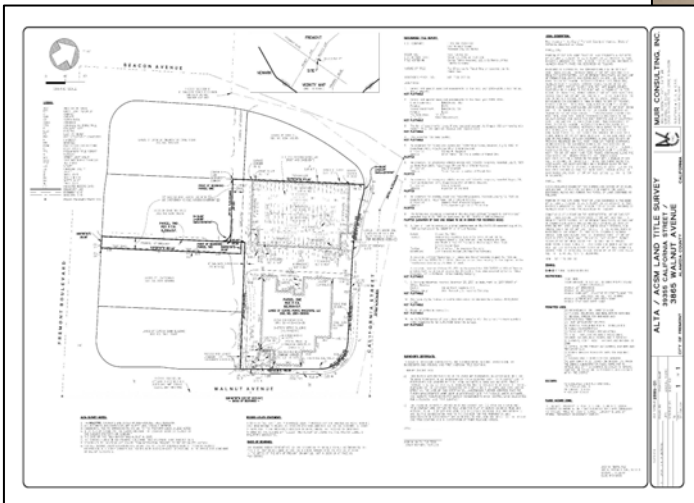
## ALTA / ACSM LAND TITLE SURVEYS

Corporate Office  
139 Church Avenue  
Oakdale, CA 95361  
(209) 845-8630  
(209) 845-8639 - fax

Branch Office  
100 W. Rincon Ave.,  
Suite 214  
Campbell, CA 95008  
(408) 871-0396  
(408) 871-0829 - fax  
[www.muirconsulting.com](http://www.muirconsulting.com)

Muir Consulting, Inc. performs ALTA Surveys throughout **California** and **Nevada**. Each ALTA Survey is prepared by our own experienced field crew, drafted to high standards by our project surveyors, every site is inspected and reviewed by our licensed land surveyors, and all projects are supervised from start to finish by the principals of the firm.

Because ALTA Surveys are entirely prepared by our experienced staff, the final product maintains a consistent, high standard prepared professionally in a timely fashion. You can be assured that your important commercial real estate transaction is being inspected by experienced licensed land surveyors.



We understand that we are the "eyes" inspecting the property to seek any encumbrances that may affect title, unwritten rights, and easements. Our years of experience in performing ALTA Land Title Surveys allows you to have confidence that the project will meet your important deadlines and provide the information that can be relied upon.

We have performed ALTA Land Title Surveys for all types of commercial projects and transactions. The focus of our ALTA Survey services have been Gas Stations, Fast Food Restaurants, Coffee Houses, Convenience Stores, Strip Malls, Grocery Stores, Warehouse Outlets, and large Shopping Centers.

Technology allows Muir Consulting, Inc. to perform surveys efficiently and diligently. By utilizing and combining GPS, Robotic Total Stations, Reflectorless Prism Technology, High Definition Scanning, and Digital Aerial Orthophotography, ALTA Surveys are performed on-time, providing a clear and concise product for the client, title company, and lawyers to review.

Our experience in dealing with ALTA Surveys make us not only competitively priced, but priced accurately. Our lump sum bids allow you to accurately forecast your project. We do not rely on "extras" or "time and material" pricing to make a profit.

Please contact Muir Consulting, Inc. for all of your commercial real estate transaction needs or visit our website and complete our Surv-Quote page to receive a timely proposal.